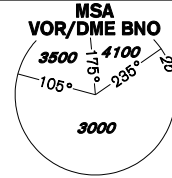


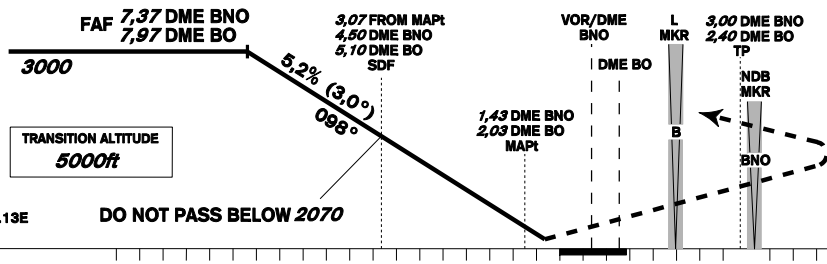
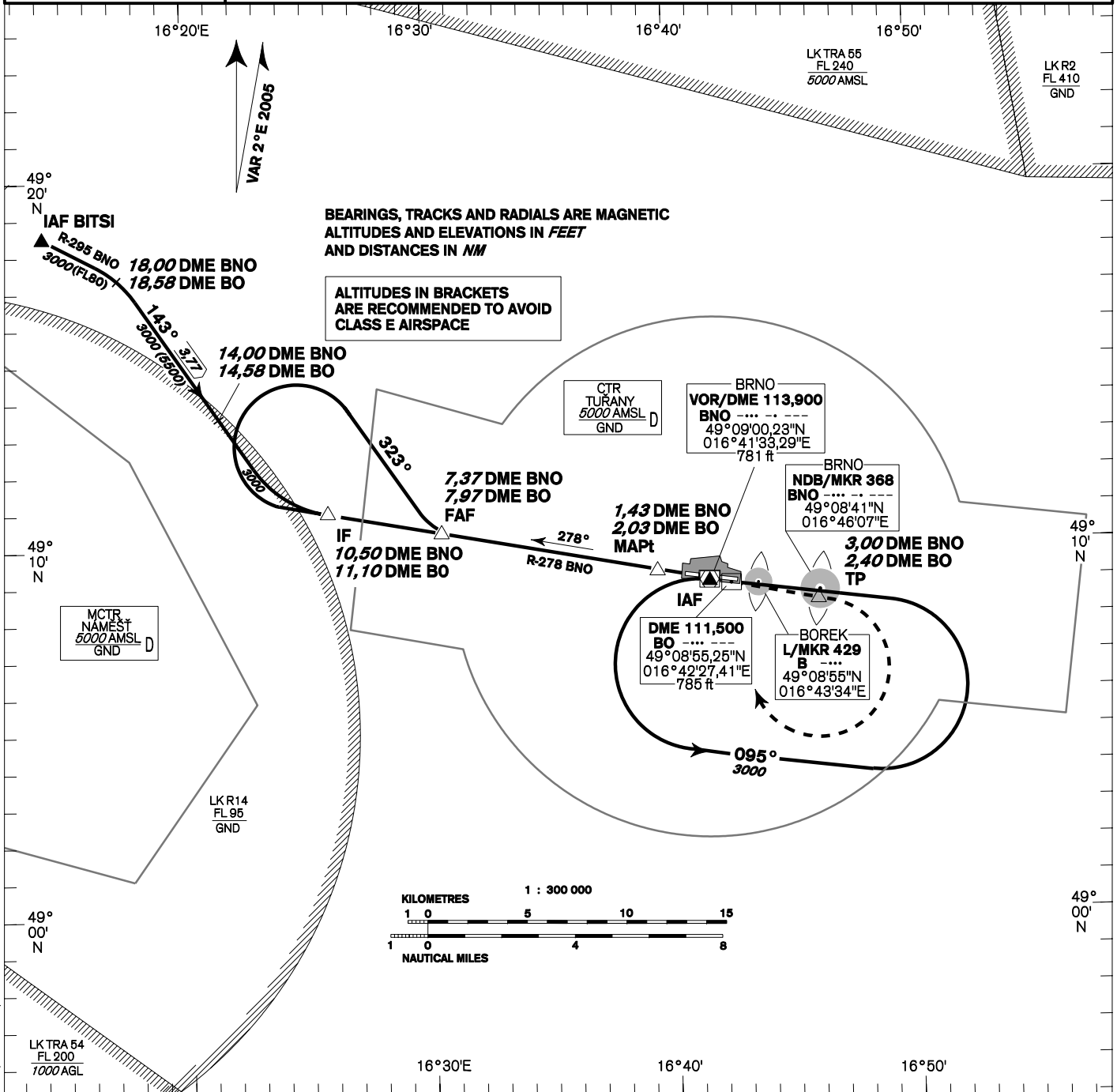
INSTRUMENT APPROACH CHART - ICAO

AERODROME ELEV 778 - 28 hPa
THR RWY 10 ELEV 764 - 28 hPa
OCH RELATED TO THR RWY 10

TUŘANY/TOWER 119,600
125,425
121,500
BRNO
APPROACH/RADAR 120,550
119,900
121,500



**BRNO/Tuřany
VOR - DME
RWY 10**



MISSED APPROACH:
Climb to 1500ft,
max 3,00 DME BNO (2,40 DME BO),
turn right to VOR/DME BNO
in climbing to 3000ft.

THR 490910.34N 0164033.13E
ELEV 764 - 28 hPa
NM FM THR10

OCA/OCH	A	B	C	D	
Straight - in Approach	ft	1090/325			
	m	333/100			
SDF not received	ft	2070/1305			
	m	631/398			
Circling	ft	1220 R / -	1360 R / -	1380 R / -	1680 R / -
	m	370 R / -	412 R / -	420 R / -	510 R / -

DME BNO NM	8	7	6	5	4	3	2
DME BO NM	8,60	7,60	6,60	5,60	4,60	3,60	2,60
DIST THR NM	7,32	6,32	5,32	4,32	3,32	2,32	1,32
ALTITUDES ft	3190	2860	2530	2210	1880	1560	1240
	kt	80	100	120	140	160	180
FAF - MAPt 5,94 NM	min:sec	4:27	3:34	2:58	2:33	2:14	1:59
Rate of descent	ft/min	540	670	810	940	1080	1210

Timing is not authorized for defining the MAPt.

change: LK TSA 25 withdrawn, FREQ APP BRNO from 119,100 to 120,550