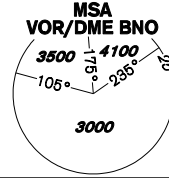


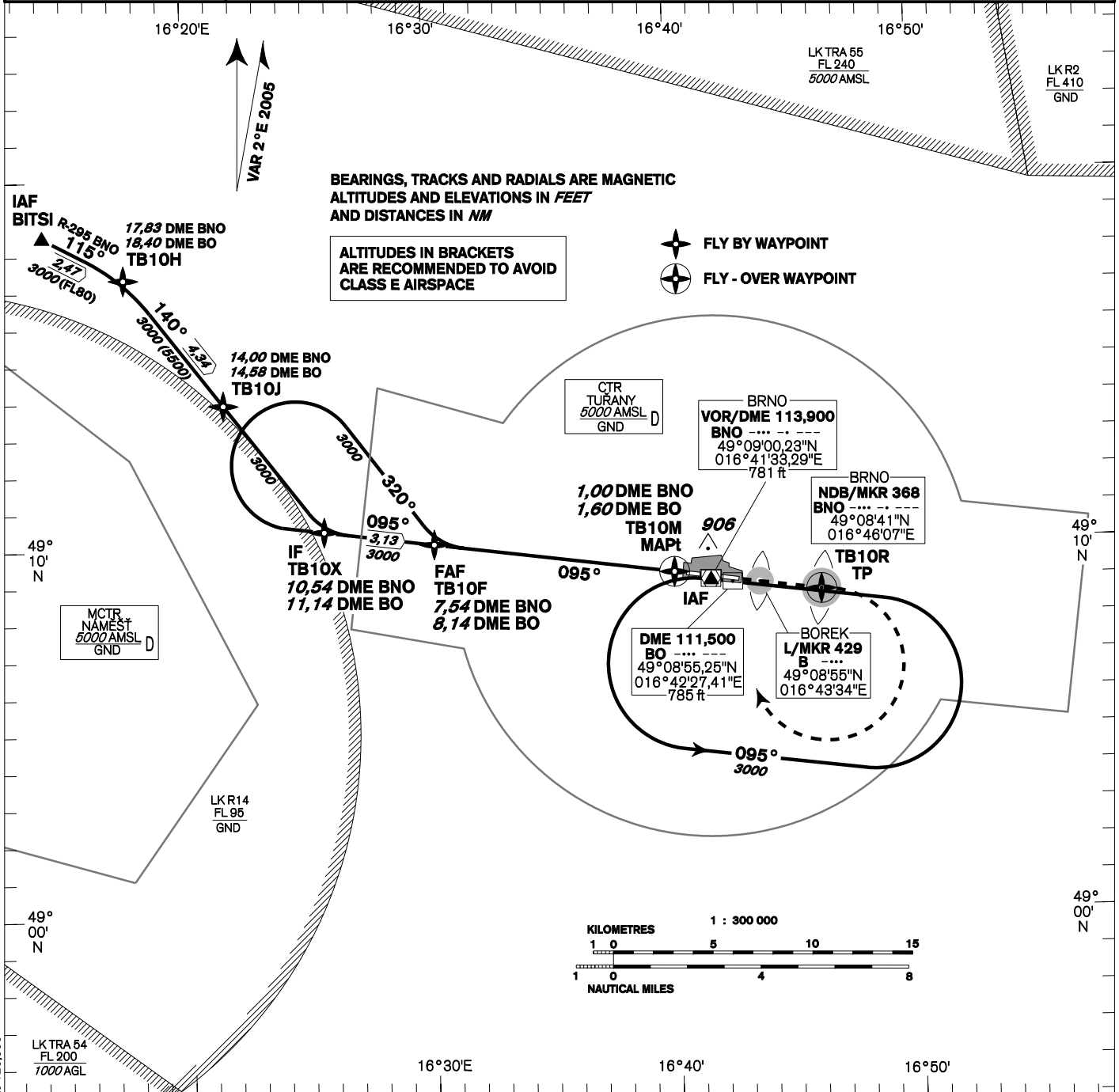
INSTRUMENT APPROACH CHART - ICAO

AERODROME ELEV 778 - 28 hPa
THR RWY 10 ELEV 764 - 28 hPa
OCH RELATED TO THR RWY 10

TUŘANY/TOWER 119,600
125,425
121,500
BRNO
APPROACH/RADAR 120,550
119,900
121,500



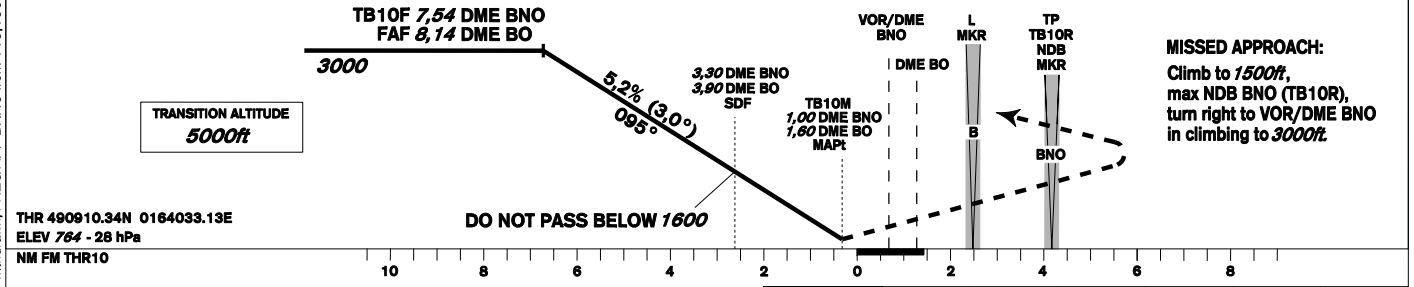
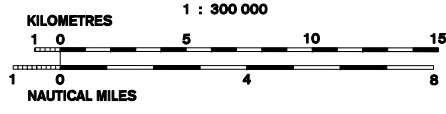
**BRNO/Tuřany
NDB - DME(GPS)
RWY 10**



BEARINGS, TRACKS AND RADIALS ARE MAGNETIC
ALTITUDES AND ELEVATIONS IN FEET
AND DISTANCES IN NM

ALTITUDES IN BRACKETS
ARE RECOMMENDED TO AVOID
CLASS E AIRSPACE

FLY BY WAYPOINT
FLY - OVER WAYPOINT



OCA/OCH	A	B	C	D	
Straight - in Approach	ft	1130/356			
	m	345/112			
SDF not received	ft	1600/836			
	m	488/255			
Circling	ft	1220 R / -	1360 R / -	1380 R / -	1680 R / -
	m	370 R / -	412 R / -	420 R / -	510 R / -

DME BNO NM	7	6	5	4	3	2
DME BO NM	7,60	6,60	5,60	4,60	3,60	2,60
DIST THR NM	6,32	5,32	4,32	3,32	2,32	1,32
ALTITUDES ft	2860	2530	2210	1880	1560	1240
FAF - MAPt 6,54 NM	kt	80	100	120	140	160
	min:sec	4:54	3:56	3:16	2:48	2:17
Rate of descent	ft/min	420	530	640	740	850

Timing is not authorized for defining the MAPt.

change: LK TSA 25 withdrawn, FREQ APP BRNO from 119,100 to 120,650

Seznam traťových bodů / Way point list		
BITSI	49 18 29,80 N	016 14 10,73 E
VOR/DME BNO	49 09 00,23 N	016 41 33,29 E
TB10H	49 17 20,21 N	016 17 30,81 E
TB10J	49 13 54,28 N	016 21 34,17 E
TB10X	49 10 26,55 N	016 25 38,94 E
TB10F	49 10 03,79 N	016 30 10,83 E
TB10M	49 09 12,85 N	016 40 03,96 E
TB10R	49 08 41,37 N	016 46 06,78 E
NDB BNO	49 08 41,37 N	016 46 06,78 E

Posloupnost traťových bodů / Way point sequence		
Od IAF BITSI/From IAF BITSI		
BITSI	IAWP	fly-by
TB10H		fly-by
TB10J		fly-by
TB10X	IWP	fly-by
TB10F	FAWP	fly-by
TB10M	MAWP	fly-over
TB10R (NDB BNO)		fly-over
VOR/DME BNO	MAHWP	fly-by

Posloupnost traťových bodů / Way point sequence		
Od IAF BNO/From IAF BNO		
VOR/DME BNO	IAWP	fly-by
TB10F		fly-by
TB10F	FAWP	fly-by
TB10M	MAWP	fly-over
TB10R (NDB BNO)		fly-over
VOR/DME BNO	MAHWP	fly-by