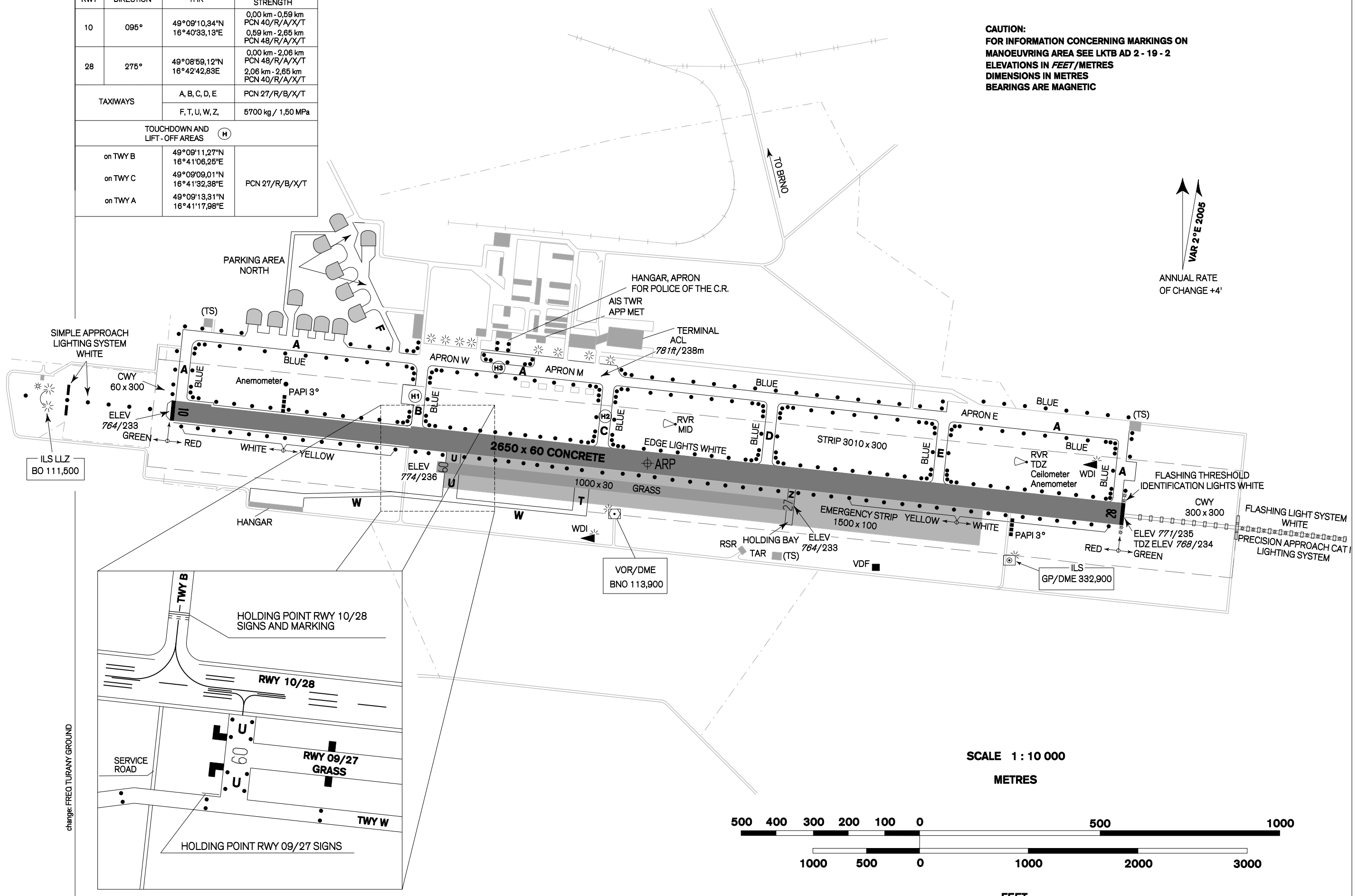


ARP 49°09'05"N 016°41'38"E		TUŘANY TWR 119,600 TUŘANY GROUND 125,425 121,500	ELEV 778 ft / 237 m	<b>AERODROME CHART - ICAO</b>	<b>BRNO/Tuřany</b>
-------------------------------	--	--	------------------------	-------------------------------	--------------------

RWY	DIRECTION	THR	BEARING STRENGTH
10	095°	49°09'10,34"N 16°40'33,13"E	0,00 km - 0,59 km PCN 40/R/A/X/T 0,59 km - 2,65 km PCN 48/R/A/X/T
28	275°	49°08'59,12"N 16°42'42,83"E	0,00 km - 2,06 km PCN 48/R/A/X/T 2,06 km - 2,65 km PCN 40/R/A/X/T
TAXIWAYS		A, B, C, D, E F, T, U, W, Z	PCN 27/R/B/X/T 5700 kg / 1,50 MPa
TOUCHDOWN AND LIFT-OFF AREAS (H)			
on TWY B	49°09'11,27"N 16°41'06,25"E		PCN 27/R/B/X/T
on TWY C	49°09'09,01"N 16°41'32,38"E		
on TWY A	49°09'13,31"N 16°41'17,98"E		

**CAUTION:**  
FOR INFORMATION CONCERNING MARKINGS ON  
MANOEUVRING AREA SEE LKTB AD 2 - 19 - 2  
ELEVATIONS IN FEET / METRES  
DIMENSIONS IN METRES  
BEARINGS ARE MAGNETIC

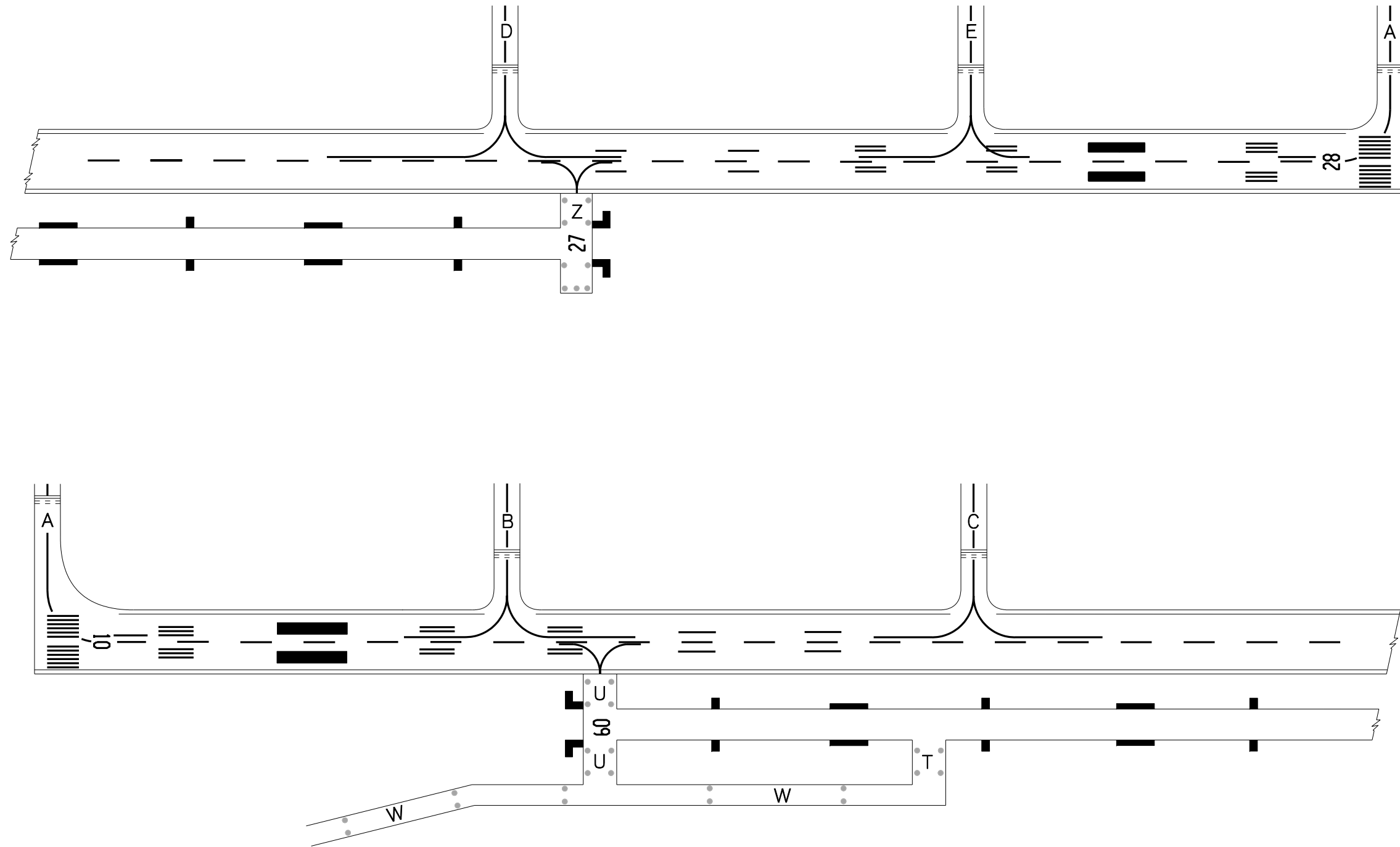
↑  
VAR 2°E 2005  
ANNUAL RATE  
OF CHANGE +4'



change: FREC. TURANY GROUND

# AERODROME CHART - ICAO - MARKINGS ON MANOEUVRING AREA

## BRNO / Tuřany



change: touchdown zone of RWY 10

